

The background of the entire image is a collage of nautical-themed elements. It includes a large, detailed world map with yellow landmasses and blue oceans. A portion of a globe is visible in the upper right, showing the Americas. A thick, light-colored rope is coiled in the center and right. In the foreground, a small book titled 'Sailing Alone Around the World' by Captain Joshua Slocum is positioned diagonally. The book has a dark blue cover with a green anchor and a green seahorse-like creature entwined around it.

Sailing Alone Around the World

by Captain Joshua Slocum

*Narrated by Jerry Stearns
with commentary by
Karen Larson, Jerry Powlas,
John Vigor, and Ted Brewer*

Sailing Alone
Around the
World



Captain Joshua Slocum

Dedication

To the one who said:
"The *Spray* will come back."



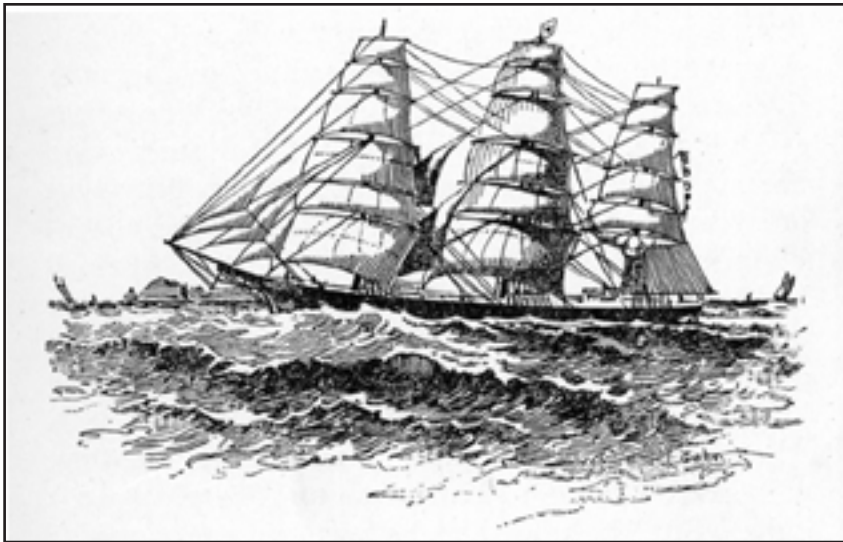
The "Spray."

From a photograph taken in Australian waters.

All illustrations included in
Sailing Alone Around the World,
first published by
The Century Company
of New York in 1905.

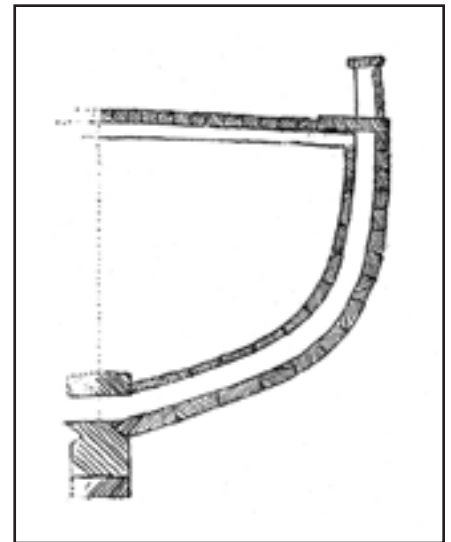
Illustrated by Thomas Fogarty
and George Varian.

Chapter One Illustrations



Drawn by W. Taber.

The Northern Light, Captain Joshua Slocum,
bound for Liverpool, 1885.



Cross-section of the *Spray*.

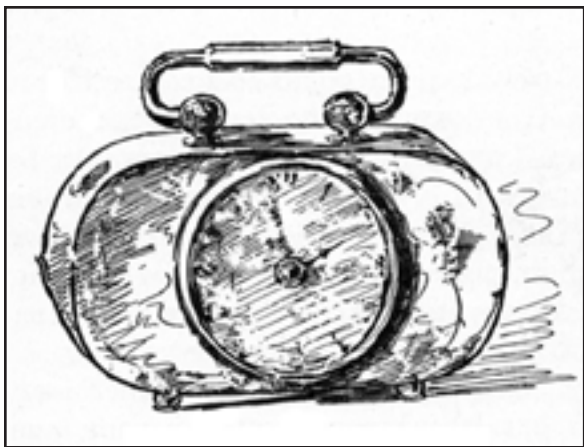


“ ‘It’ll crawl!’ ”

Chapter Two Illustrations



“‘No dorg nor no cat.’”



Captain Slocum's chronometer.

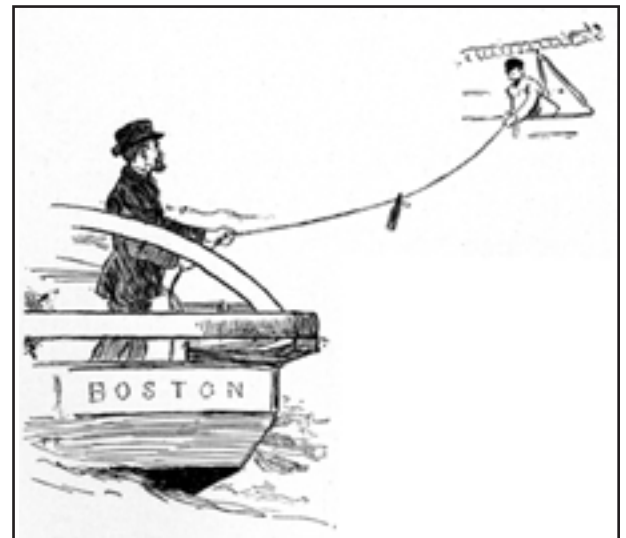


The deacon's dream.

Chapter Three Illustrations



“ ‘Good evening, sir.’ ”



“He also sent his card.”



Chart of the *Spray*'s course around the world —April 24, 1895, to July 3, 1898.

Chapter Three Illustrations (continued)



The island of Pico.



Chart of the *Spray's* Atlantic voyages from Boston to Gibraltar, thence to the Strait of Magellan, in 1895, and finally homeward bound from the Cape of Good Hope in 1898.

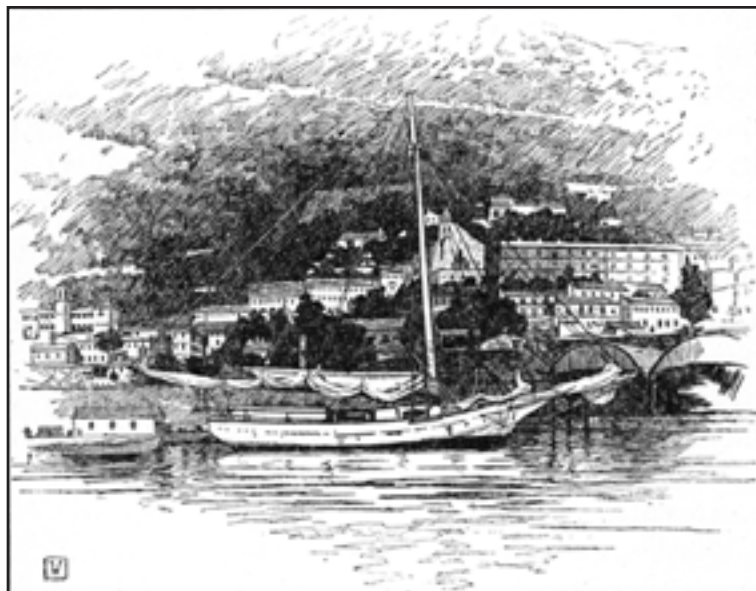
Chapter Four Illustrations



The apparition at the wheel.

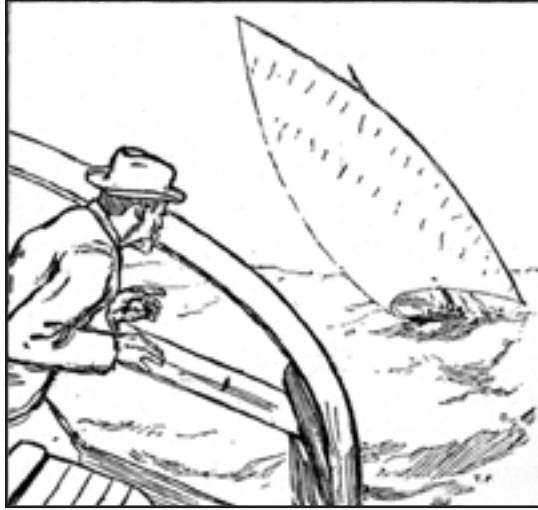


Coming to anchor at Gibraltar.



The *Spray* at anchor off Gibraltar.

Chapter Five Illustrations



Chased by pirates.

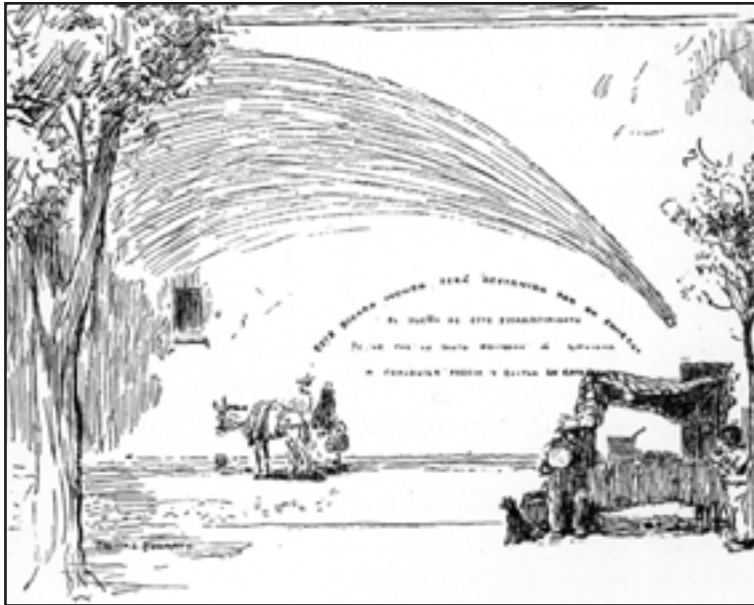
Chapter Six Illustrations



"I suddenly remembered that I could not swim."

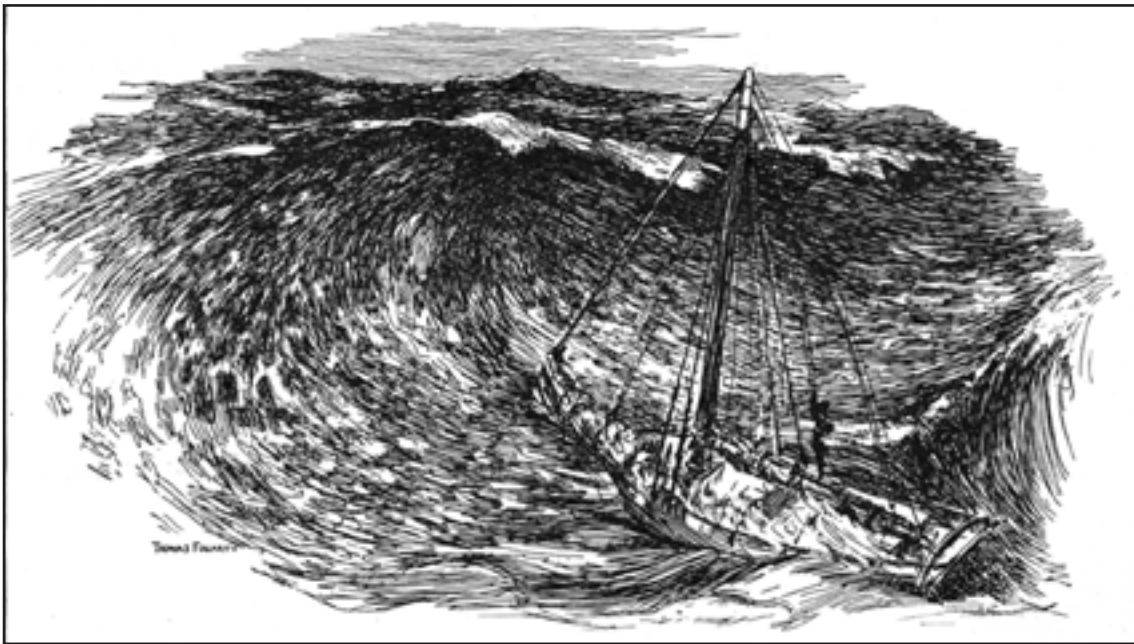


A double surprise.



At the sign of the comet.

Chapter Seven Illustrations



A great wave off the Patagonian coast.



Entrance to the Strait of Magellan.

Chapter Seven Illustrations (continued)



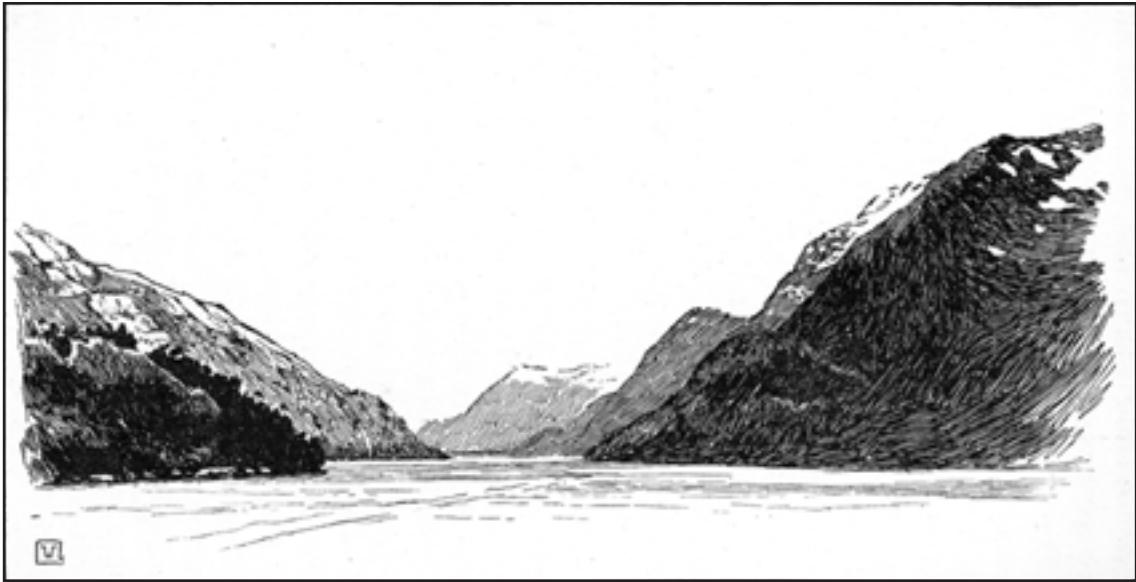
The course of the *Spray* through the Strait of Magellan.



The man who wouldn't ship
without another
"mon and a doog."



A Fuegian Girl.



Looking west from Fortescue Bay, where the *Spray* was chased by Indians.
(From a photograph.)

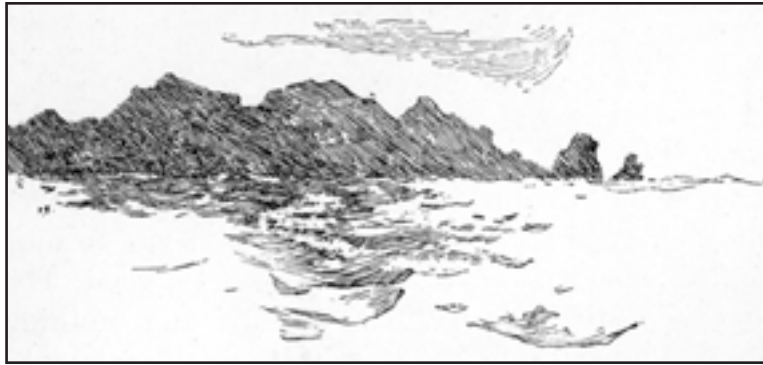


A brush with Fuegians.



A bit of friendly assistance.
(After a sketch by Midshipman Miguel Arenas.)

Chapter Eight Illustrations



Cape Pillar.



“They howled like a pack of hounds.”

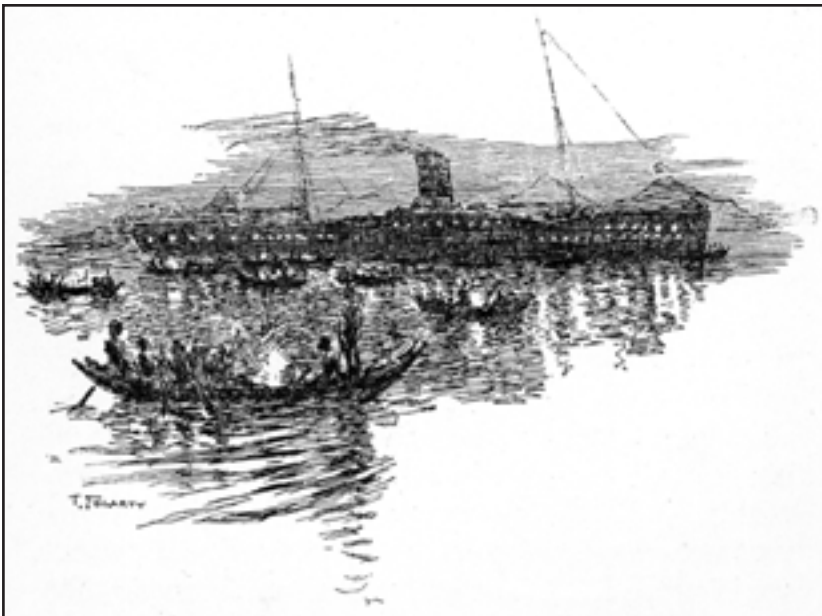


A glimpse of Sandy Point (Punta Arenas) in the Strait of Magellan.

Chapter Nine Illustrations



“ ‘Yammerschooner!’ ”



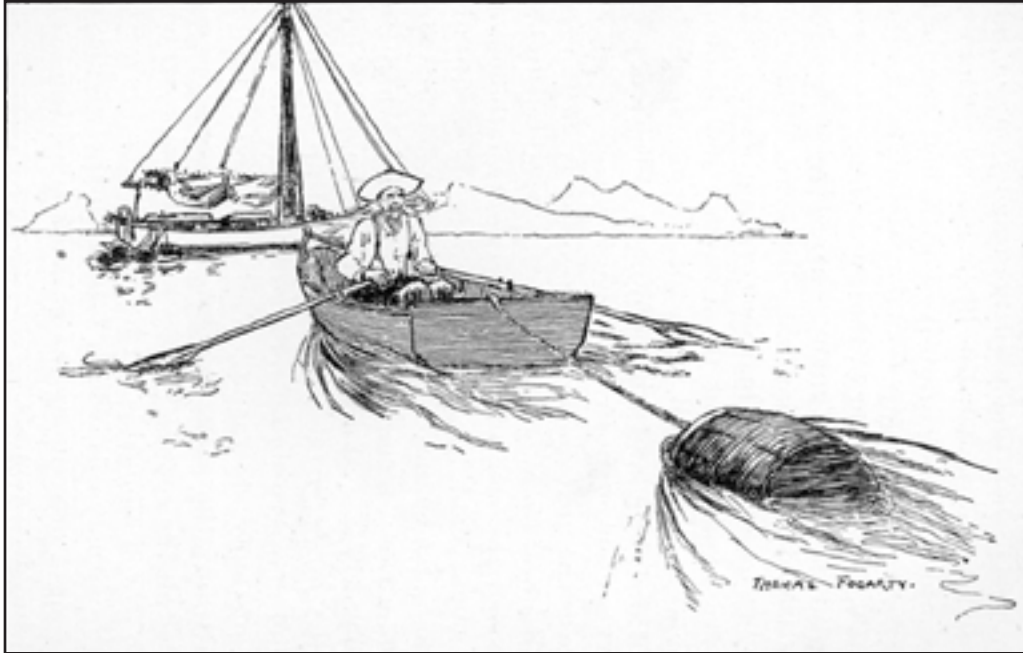
A contrast in lighting — the electric lights of the *Colombia* and the canoe fires of the Fortescue Indians.



Records of passages through the strait at the head of Borgia Bay.

Note: On a small bush nearer the water there was a board bearing several other inscriptions, to which were added the words “Sloop *Spray*, March, 1896.”

Chapter Nine Illustrations (continued)



Salving wreckage.

Chapter Ten Illustrations



"The first shot uncovered three Fuegians."



The Spray approaching Juan Fernandez, Robinson Crusoe's Island.

Chapter Eleven Illustrations



The house of the king.

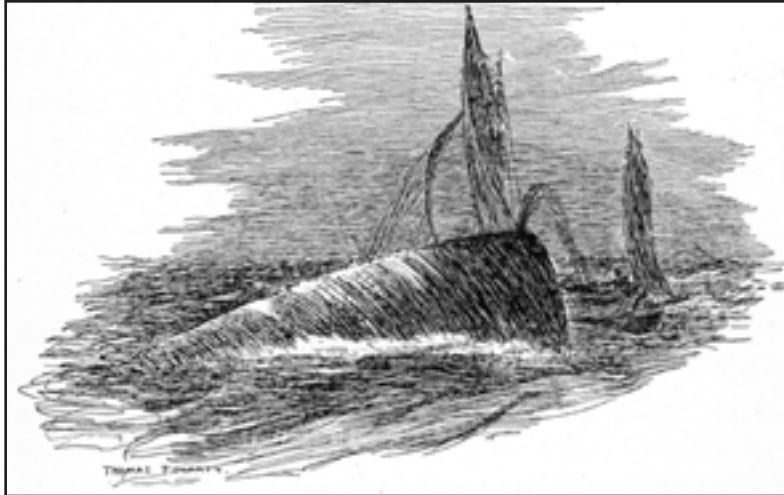


Robinson Crusoe's cave.



The man who called a cabra a goat.

Chapter Twelve Illustrations



Meeting with the whale.



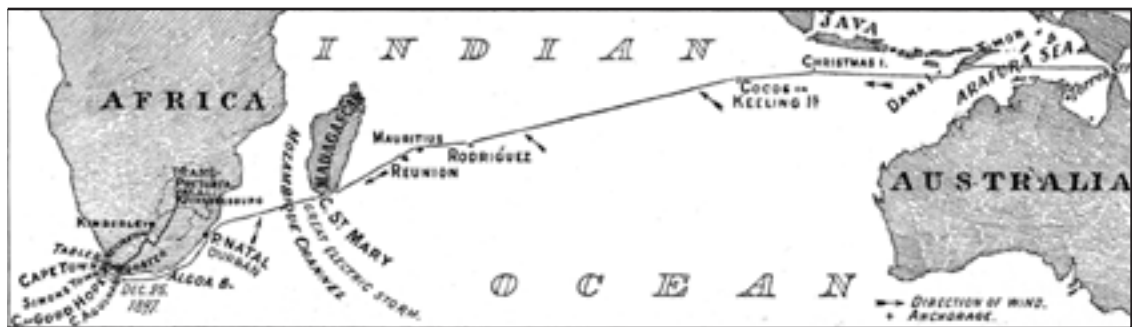
First exchange of courtesies in Samoa.



Vailima, the home of Robert Louis Stevenson.



The Spray's course from the Strait of Magellan to Torres Strait.



The Spray's course from Australia to South Africa.

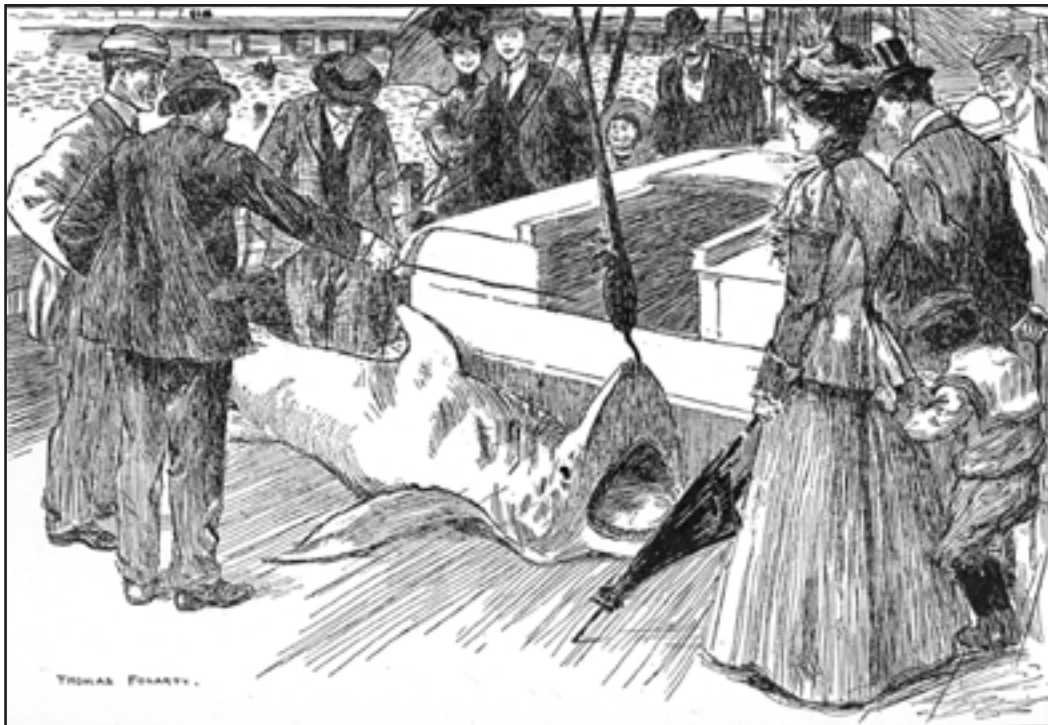
Chapter Thirteen Illustrations



The accident at Sydney.



Captain Slocum working the *Spray* out of the Yarrow River, a part of Melbourne harbor.



The shark on the deck of the *Spray*.



On board at St. Kilda. Retracing on the chart the course of the *Spray* from Boston.

Chapter Fourteen Illustrations



The *Spray* in her port duster at Devonport, Tasmania, February 22, 1897.



“ ‘Is it a-goin’ to blow!’ ”

Chapter Fifteen Illustrations



The Spray leaving Sydney, Australia, in the new suit of sails given by Commodore Foy of Australia.

(From a photograph.)

Chapter Sixteen Illustrations



The *Spray* ashore for “boot-topping” at the Keeling Islands.
(From a photograph.)



Captain Slocum drifting out to sea.

Chapter Seventeen Illustrations



The Spray at Mauritius.



Captain Joshua Slocum.

Chapter Eighteen Illustrations



Cartoon printed in the Cape Town "Owl" of March 5, 1898, in connection with an item about Captain Slocum's trip to Pretoria.



Captain Slocum, Sir Alfred Milner (with the tall hat),
and Colonel Saunderson, M. P., on the bow of the *Spray*
at Cape Town.



“Reading day and night.”

Chapter Nineteen Illustrations

There are no illustrations in Chapter 19.

Chapter Twenty Illustrations



The *Spray* passed by the *Oregon*.

Chapter Twenty-One Illustrations

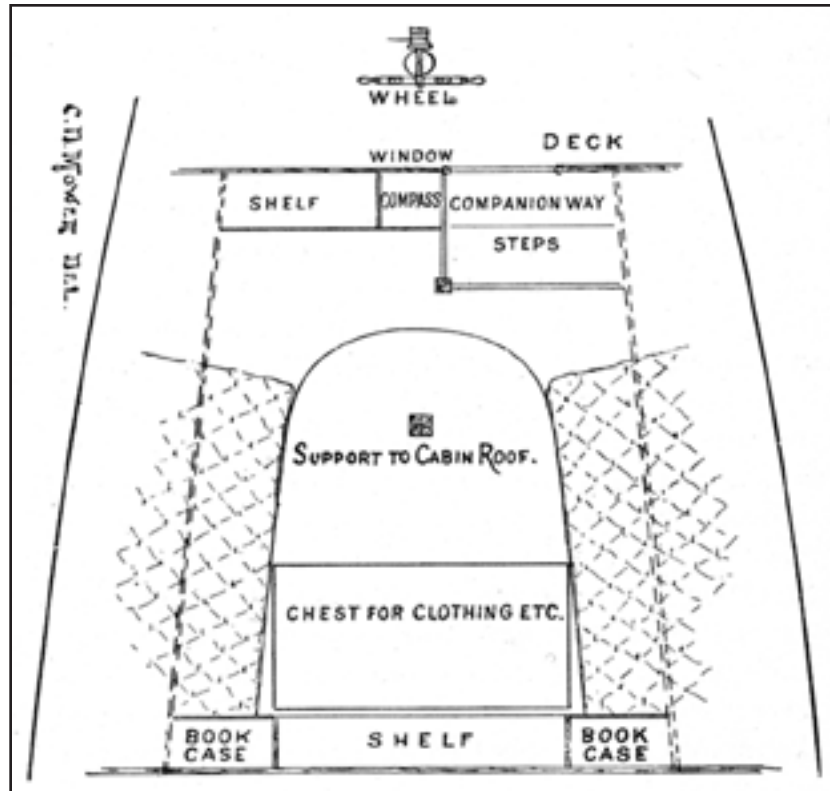


The *Spray* in the storm off New York.

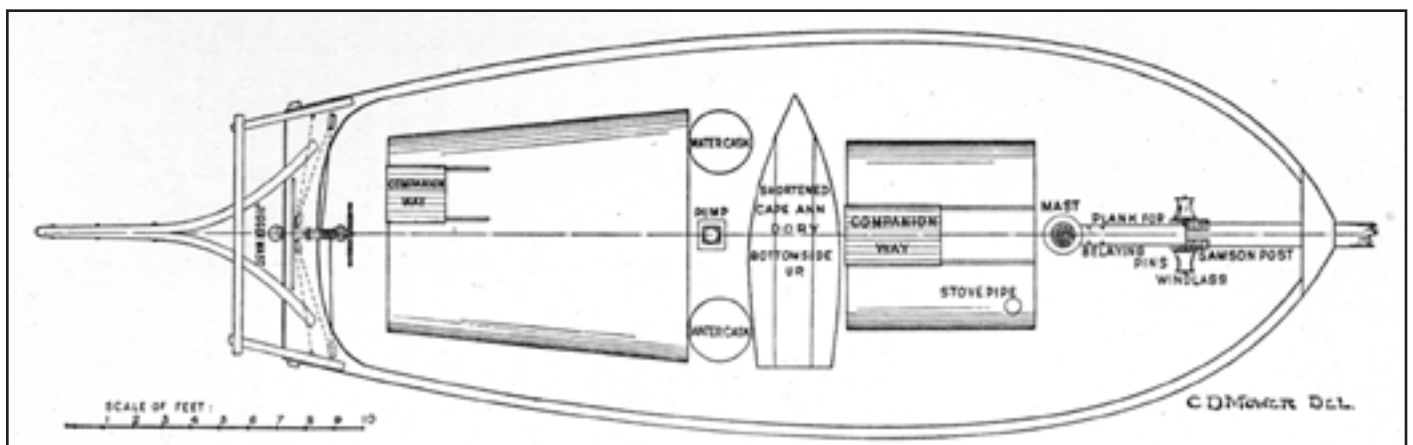


Again tied to the old stake at Fairhaven.

Appendix Illustrations

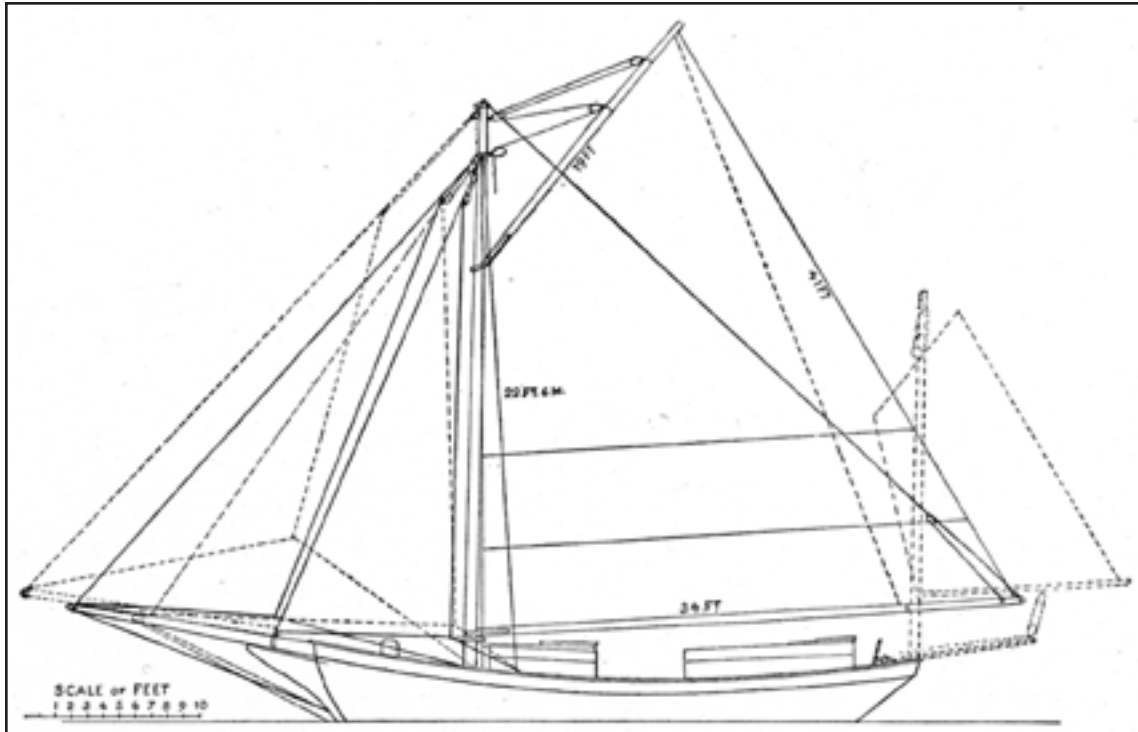


Plan of the after cabin of the *Spray*.



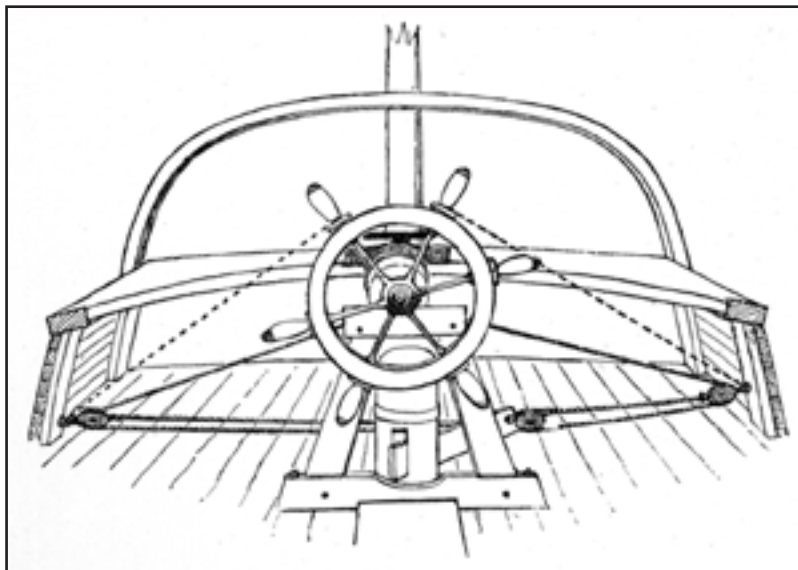
Deck-plan of the *Spray*.

Appendix Illustrations (continued)



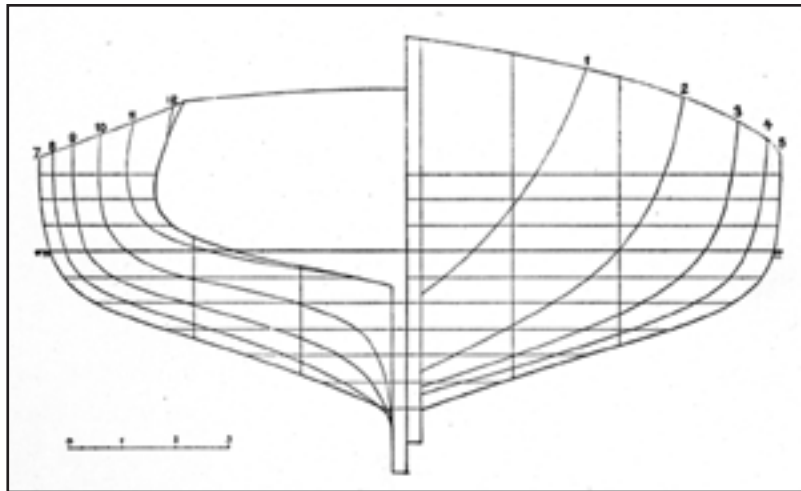
Sail-plan of the *Spray*.

The solid lines represent the sail-plan of the *Spray* on the starting for the long voyage. With it she crossed the Atlantic to Gibraltar, and then crossed again southwest to Brazil. In South American waters the bowsprit and boom were shortened and the jigger-sail added to form the yawl-rig with which the rest of the trip was made, the sail-plan of which is indicated by the dotted lines. The extreme sail forward is a flying jib occasionally used, set to a bamboo stick fastened to the bowsprit. The manner of setting and bracing the jigger-mast is not indicated in this drawing, but may be partly observed in the plans on the next page.

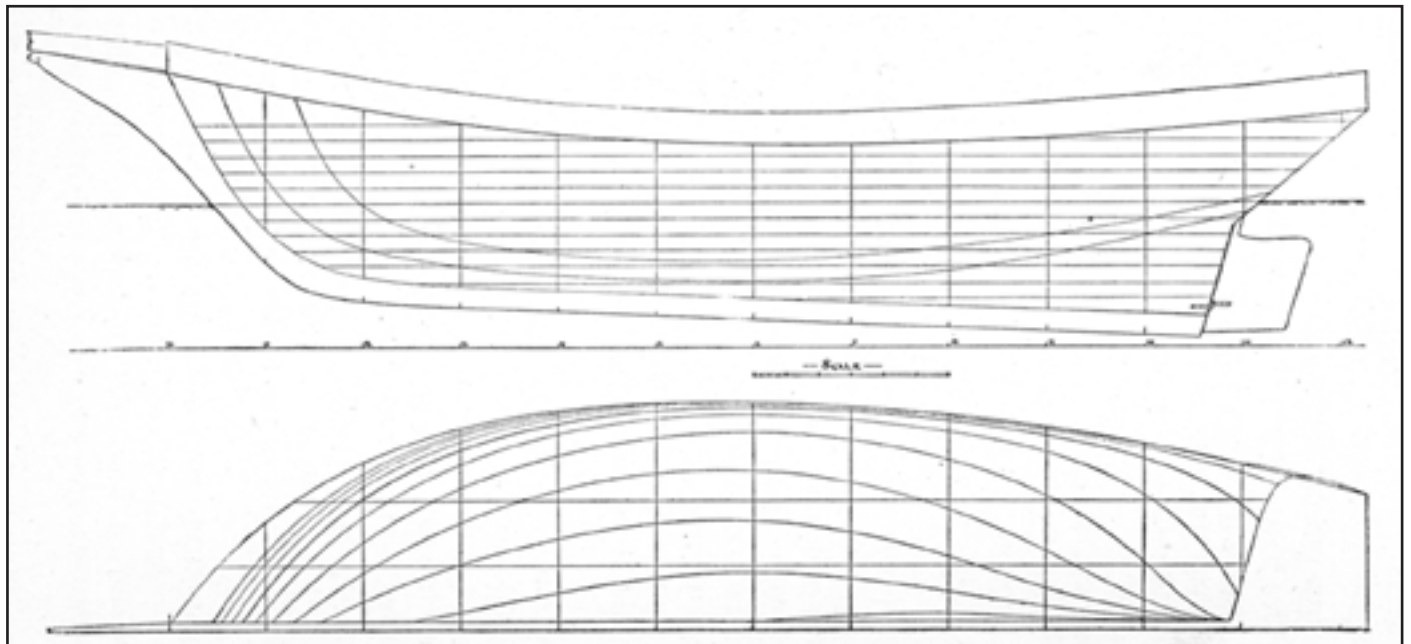


Steering-gear of the *Spray*.

The dotted lines are the ropes used to lash the wheel. In practice the loose ends were belayed, one over the other, around the top spokes of the wheel.



Body-plan of the *Spray*.



Lines of the *Spray*.